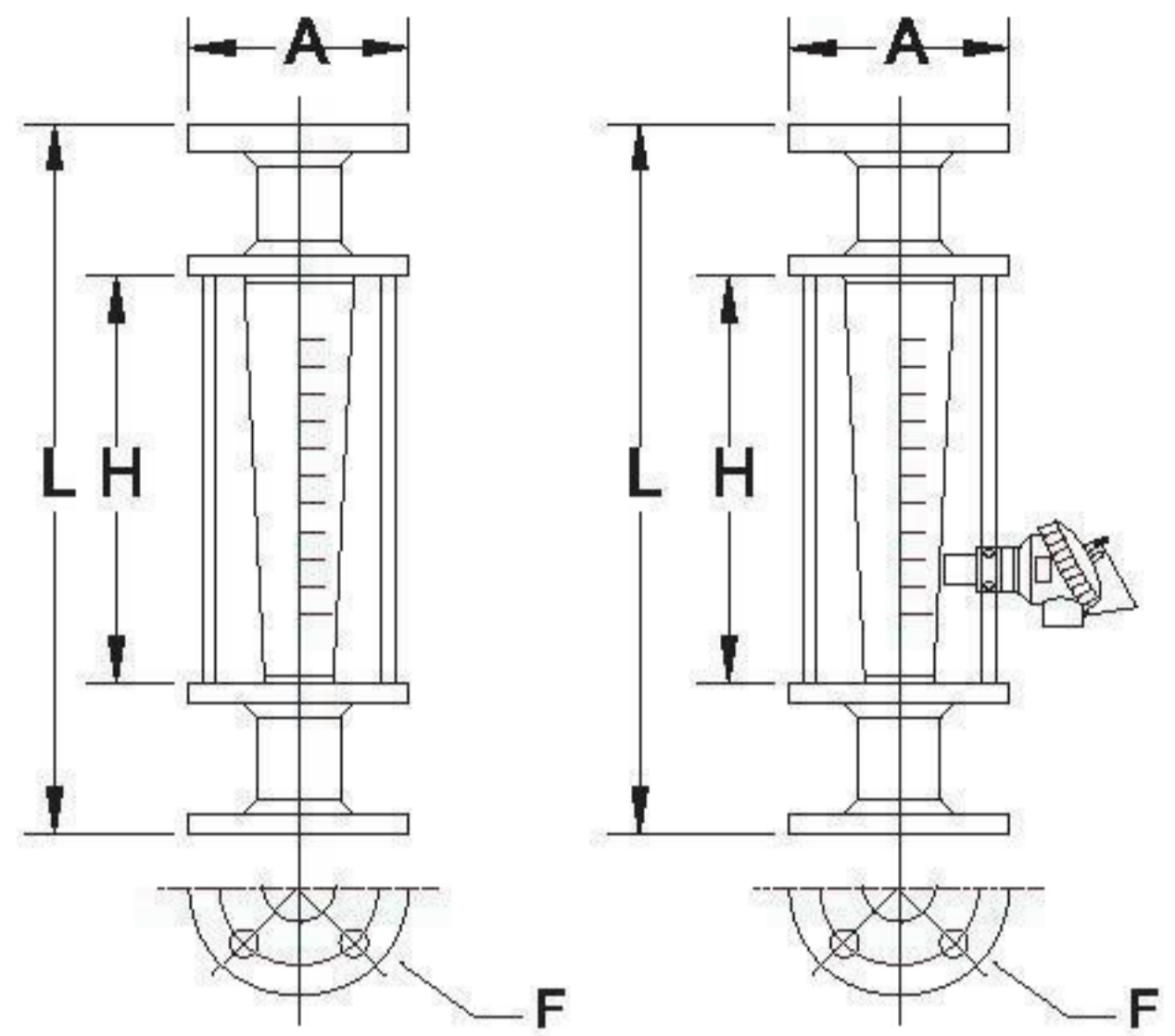


# MODEL H-100F 面積式流量計

## MODEL H-100-F

316SS, 304SS

PP, PVC



### DIMENSIONS FS,FW,FI,FV,FP,FD

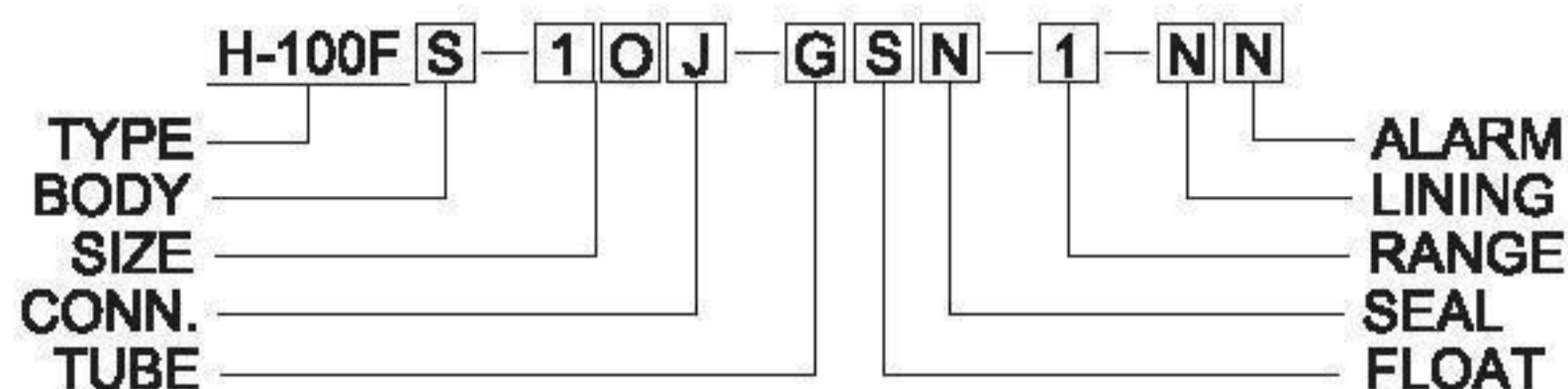
MODEL	10	15	18	20	25	32	40	50	65	80	100
L	260	260	260	340	340	340	340	340	340	410	430
H	150	150	150	200	200	200	200	200	200	250	250
A <sup>∅</sup>	90	95	95	100	125	135	140	155	175	185	210
F	3/8	1/2	1/2	3/4	1	1 1/4	1 1/2	2	2 1/2	3	4

### MATERIALS

BODY	FLOAT	TUBE	SEAL	ALARM
S SUS 304	S SUS 304	G GLASS	N NEOPRENE	N NO
W SUS 316	W SUS 316	P P.C (POLY CARBONATE)	V VITON	H HI
I C.S	T TEFLON		T TEFLON	L LO
V P.V.C	V P.V.C			A HI LO
P P.V.D.F.	D P.V.D.F.	LINING	BODY	
D P.P	P P.P	N NO	T TEFLON	
O OTHERS	N NYLON	P P.P	O OTHERS	

### SPECIFICATIONS

MODEL	FS	FW	FI	FV	FP	FD	FO
MAX. TEMP.	100°C		50°C		80°C	100°C	OTHERS
MAX. PRESS.	10kg/cm <sup>2</sup> G			6kg/cm <sup>2</sup> G			OTHERS
CONN. FLANGE	J JIS 10K	A ANS 150L	B ID	DIN PN16	O OTHERS		
ACCURACY	WATER ± 2% F.S			AIR ± 3% F.S			
GLASS	TEMP. 100°C		PRESS. 4-6kg/cm <sup>2</sup> G				
POLY CARBONATE	TEMP. 100°C		PRESS. 6-12kg/cm <sup>2</sup> G				



### STANDARD FLOW RANGE

FLUID SIZE	RANGE			
	WATER	L/MIN.	AIR	NL/MIN.
10	1 0.03-0.3	3 0.08-0.8	5 0.5-5.0	7 1-15
	2 0.05-0.5	4 0.1-1.0	6 1-10	8 2-20
15	1 0.1-1.0	3 0.3-3.0	5 3-30	7 6-60
	2 0.2-2.0	4 0.4-4.0	6 5-50	8 8-80
18	1 0.5-5.0	3 1-10	5 10-100	7 20-200
	2 0.6-6.0	4 1-15	6 15-150	8 25-250
20	1 1-10	3 2-20	5 20-200	7 30-300
	2 1-15	4 3-30	6 25-250	8 50-500
25	1 3-30	3 5-50	5 50-500	7 100-1000
	2 4-40	4 8-80	6 80-800	8 150-1500
32	1 5-50	3 10-100	5 150-1500	7 250-2500
	2 8-80	4 12-120	6 200-2000	8 300-3000
40	1 10-100	3 20-200	5 250-2500	7 350-3500
	2 15-150	4 25-250	6 300-3000	8 400-4000
50	1 15-150	3 25-250	5 350-3500	7 450-4500
	2 20-200	4 30-300	6 400-4000	8 500-5000
65	1 30-300	3 50-500	5 450-4500	7 600-6000
	2 40-400	4 60-600	6 500-5000	8 700-7000
80	1 50-500	3 80-800	5 700-7000	7 900-9000
	2 60-600	4 100-1000	6 800-8000	8 1000-10000
100	1 80-800	3 120-1200	5 900-9000	7 1200-12000
	2 100-1000	4 160-1600	6 1000-10000	8 1500-15000

NOTE: 1. O OTHERS FLOW RANGE

2. H-100F 型流量計是直接垂直安裝於管路上，流體底部進，上部出。

歡迎訂製各式特殊流量計，敬請惠予告知下列之條件：

1. 型式 (Model)
2. 流體 (Fluid)
3. 材質 (Material)
4. 流量範圍 (Flow Range)
5. 接續方式 (Connection)
6. 操作壓力 (Operating pressure)
7. 操作溫度 (Operating temperature)
8. 濃度及黏度 (Concentration & Viscosity)
9. 比重或密度 (Specific Gravity & Density)